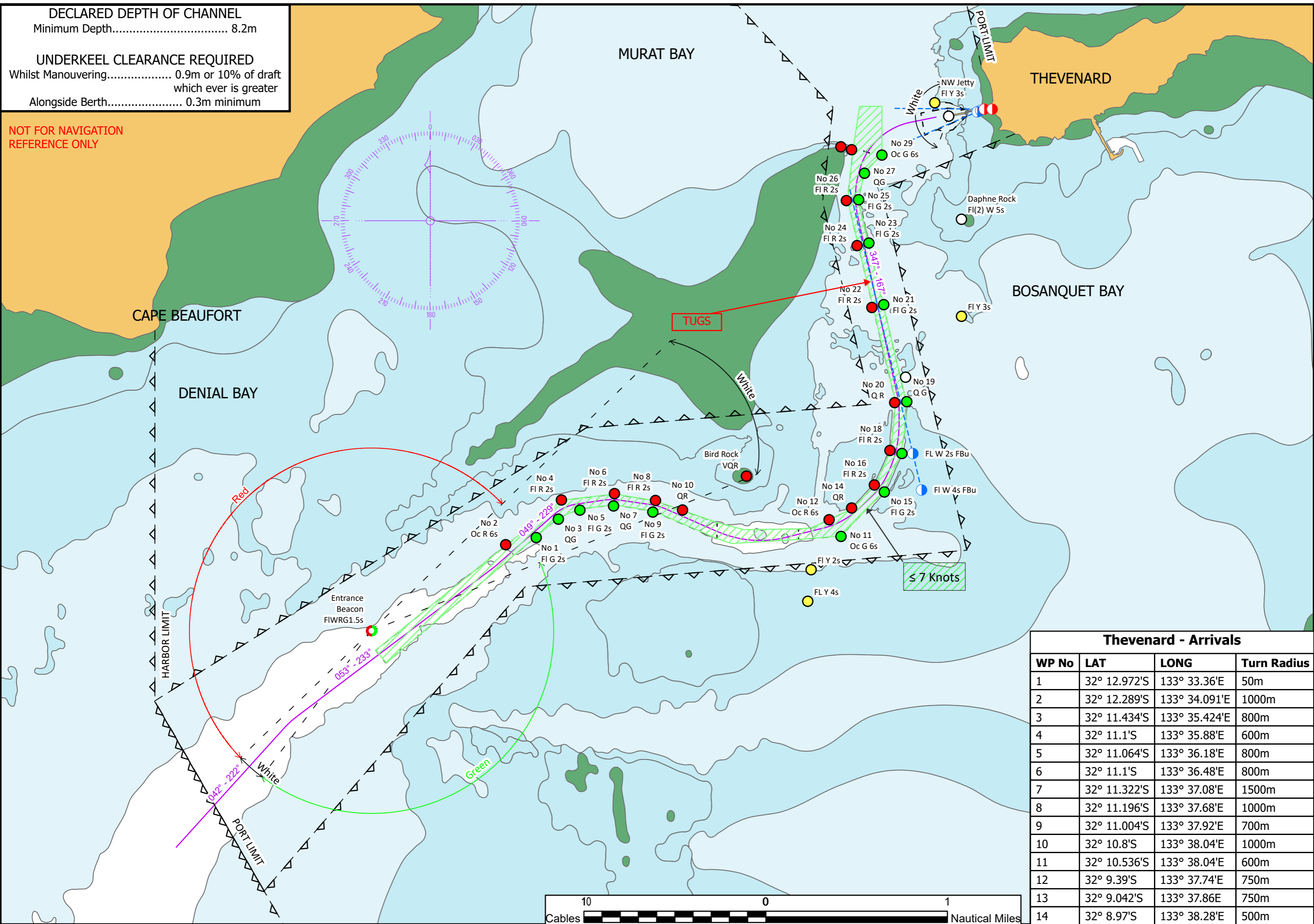


DECLARED DEPTH OF CHANNEL
 Minimum Depth..... 8.2m

UNDERKEEL CLEARANCE REQUIRED
 Whilst Manouvering..... 0.9m or 10% of draft
 which ever is greater

Alongside Berth..... 0.3m minimum

NOT FOR NAVIGATION
REFERENCE ONLY



Thevenard - Arrivals			
WP No	LAT	LONG	Turn Radius
1	32° 12.972'S	133° 33.36'E	50m
2	32° 12.289'S	133° 34.091'E	1000m
3	32° 11.434'S	133° 35.424'E	800m
4	32° 11.1'S	133° 35.88'E	600m
5	32° 11.064'S	133° 36.18'E	800m
6	32° 11.1'S	133° 36.48'E	800m
7	32° 11.322'S	133° 37.08'E	1500m
8	32° 11.196'S	133° 37.68'E	1000m
9	32° 11.004'S	133° 37.92'E	700m
10	32° 10.8'S	133° 38.04'E	1000m
11	32° 10.536'S	133° 38.04'E	600m
12	32° 9.39'S	133° 37.74'E	750m
13	32° 9.042'S	133° 37.86'E	750m
14	32° 8.97'S	133° 38.28'E	500m

