



INSTRUMENT OF AUTHORITY

Flinders Ports Pty Ltd

is authorised as a

VTS PROVIDER

in accordance with the provisions of
Marine Order 64 (Vessel Traffic Services) 2022 (MO64)

Objectives of the VTS

- Flinders Ports VTSC to maintain a traffic image for the entirety of the defined VTS coverage areas.
- Adelaide VTS communications system to provide the capability to interact with marine traffic throughout all VTS areas.
- Capability to interact with a vessel to influence the decision making process on board the vessel.
- Ensure both internal and external training requirements are met by the use of the Flinders Ports VTSO training policy.
- Reduce the overall number of incidents within the VTS coverage areas.
- Maintain effective relationships with allied services and stakeholders.
- Enhance efficiency in order to reduce waiting times for marine traffic.
- Ensure all vessels that breach either Port Rules or the VTS regulations are notified via a formal process.
- Maintain and update the Quality Management System.

Conditions of Authorisation

1. Flinders Ports Pty Ltd is authorised to render vessel traffic services as defined in the Guidelines for Vessel Traffic Services mentioned in IMO Resolution A.1158(32).
2. Flinders Ports Pty Ltd may only provide these services in the geographical areas approved by AMSA at Schedules 1-8 of this Instrument (the VTS Areas).
3. Flinders Ports Pty Ltd may only:
 - a. require reports or other information from the master of a vessel in accordance with section 22(1) of MO64; and
 - b. give instructions to the master of a vessel, in accordance with section 22(2) of MO64, with which the master must comply,

when the vessel is located in waters within the VTS Areas.

4. Flinders Ports Pty Ltd must operate in accordance with AMSA's:

- a. VTS compliance and enforcement framework; and
- b. Guidance on the qualifications and training for VTS personnel.

NOTE: Paragraphs 7(1)(a) and 7(1)(c) of MO64 provide that a VTS provider must operate in accordance with the IMO's Guidelines for Vessel Traffic Services adopted by IMO Resolution A.1158(32) as if the Guidelines were mandatory and establish and operate the VTS in accordance with the normative provisions of IALA Standards 1010, 1040, 1050 and 1070.

Issued at CANBERRA, AUSTRALIA
Australian Maritime Safety Authority

Suraj Joshi

Manager Coastal Pilotage and Vessel Traffic Services



Signature of Delegate



Stamp of the issuing Authority

Certificate Number:	ADL-02	Date of Authorisation:	4 Dec 2025	Expiry Date:	3 Dec 2030
	ADL-02.01	Amendment (31 Mar 2026) Certificate amended to remove incorrect 'Ocean' label from the Adelaide chartlet.			

SCHEDULE 1 – Adelaide VTS Area

Description of the VTS Area approved by AMSA

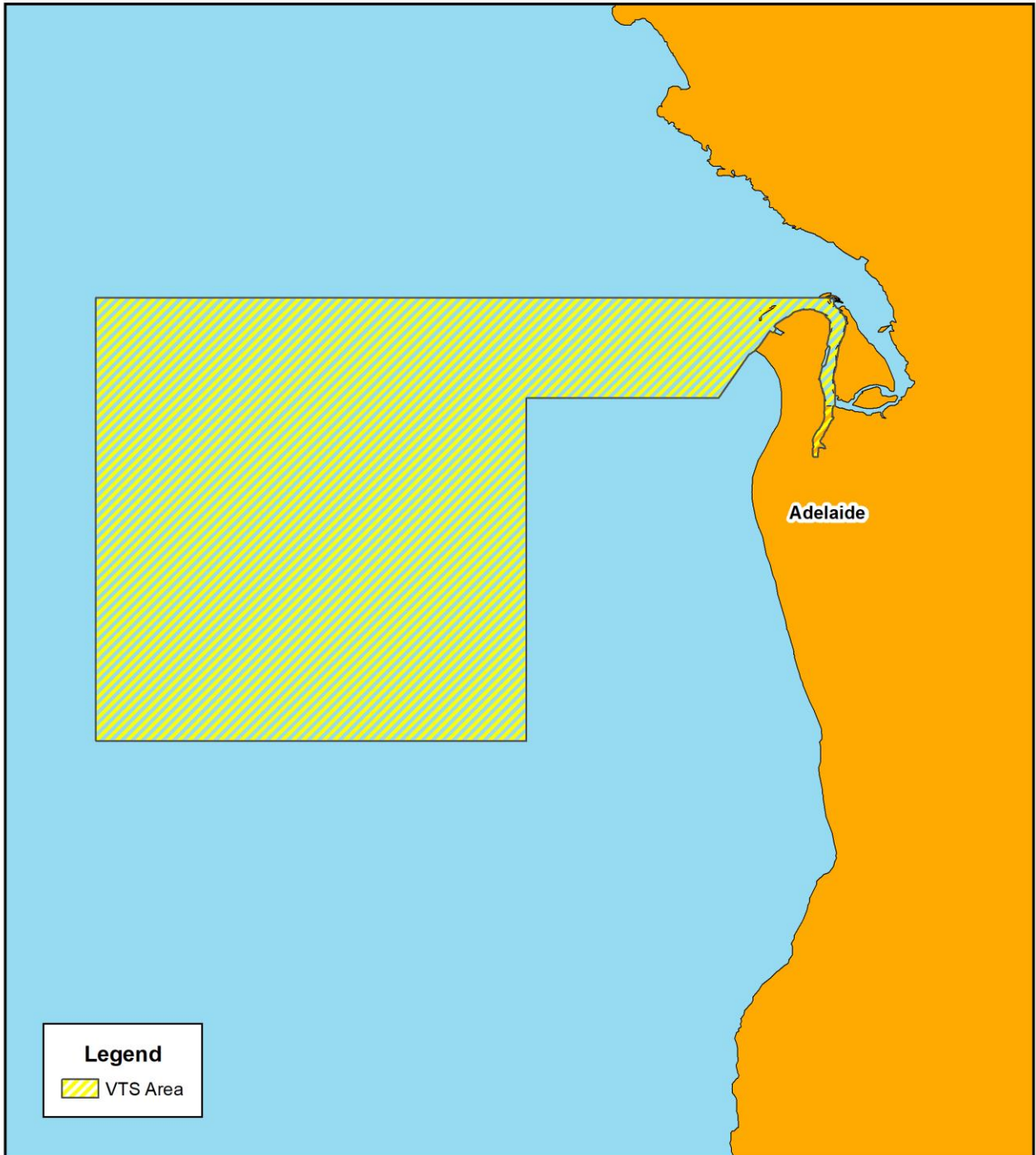
The subjacent land underlying, and adjacent land extending from the waters, rivers, creeks and inlets to high water mark bounded as follows:

- commencing at Point Grey (138°30'48.3"E, 34°45'27.02"E) then due west along a line to a point at Latitude 34°45'26.8"S, Longitude 138°09'12.2"E;
- then southerly to a point at Latitude 34°58'30.9"S, Longitude 138°09'12.2"E;
- then generally easterly to a point at Latitude 34°58'31.4"S, Longitude 138°21'54.3"E;
- then generally northerly to the south western corner of the Port Adelaide Port Operating Limit;
- then along a line due east to its intersection with the south westerly production of the Number 4 Leading Lights;
- then generally north-easterly along the production to its intersection with high water mark on the southern face of the Southern Breakwater;
- then generally north-easterly along high water mark to its intersection with south western boundary of Section 694 Hundred of Port Adelaide;
- then generally north-westerly along that boundary of Section 694 Hundred of Port Adelaide across the Southern Breakwater to its intersection with high water mark on the northern face of the Southern Breakwater;
- then generally north-easterly along high water mark to the northern extremity of Number 4 berth;
- then generally south-easterly along high water mark to its intersection with the production southerly of the high water mark of the western face of the breakwater at the Royal South Australian Yacht Squadron (RSAYS);
- then generally north-easterly along the production across the RSAYS Basin;
- then generally north-westerly and north-easterly along high water mark to Pelican Point;
- then generally south-easterly and southerly along high water mark to its intersection with a line across the Port Adelaide River perpendicular to the western face of Number 18 berth and intersecting the western face of Number 18 berth and its southerly production at the southern extremity of the western face of Number 18 berth;
- then generally easterly along that perpendicular line across the Port Adelaide River to its intersection with high water mark;
- then generally northerly and easterly along high water mark, including Number 3 dock, to its intersection with the Wave Screen in North Arm;
- then generally northerly along the western face of the Wave Screen and its production to intersect with high water mark on Torrens Island;
- then generally northerly along high water mark to the point of commencement at Point Grey and including Portion of Section 694 Hundred of Port Adelaide being the area described as easement E on FPX 43068 but excluding:
 - Allotment 5 FP 102960
 - Allotment 707 FP 50323 and
 - that portion of Allotment 33 Deposited Plan 75708 which comprises the Marina Adelaide basin and entrance to that basin and is bounded by a straight line across the opening to the entrance that is an extension of the high water mark on the western bank of the river.

VTS Area - Adelaide



Australian Government
Australian Maritime Safety Authority



This map was produced by the
Australian Maritime Safety Authority
GPO Box 2181
Canberra, ACT, 2601
© Commonwealth of Australia 2026

Author: Kerrie Abercrombie
Date: 31/03/2026
Map name: vts_chartlet_adelaide_VTS.mxd

Base Map
ga_coast100k_gda94_pl

Data Sources
VTS area provided by Flinders Ports

Map not to be used for navigational purposes.

0 2 4 6 8
Nautical Miles



SCHEDULE 2 – Ardrossan VTS Area

Description of the VTS Area approved by AMSA

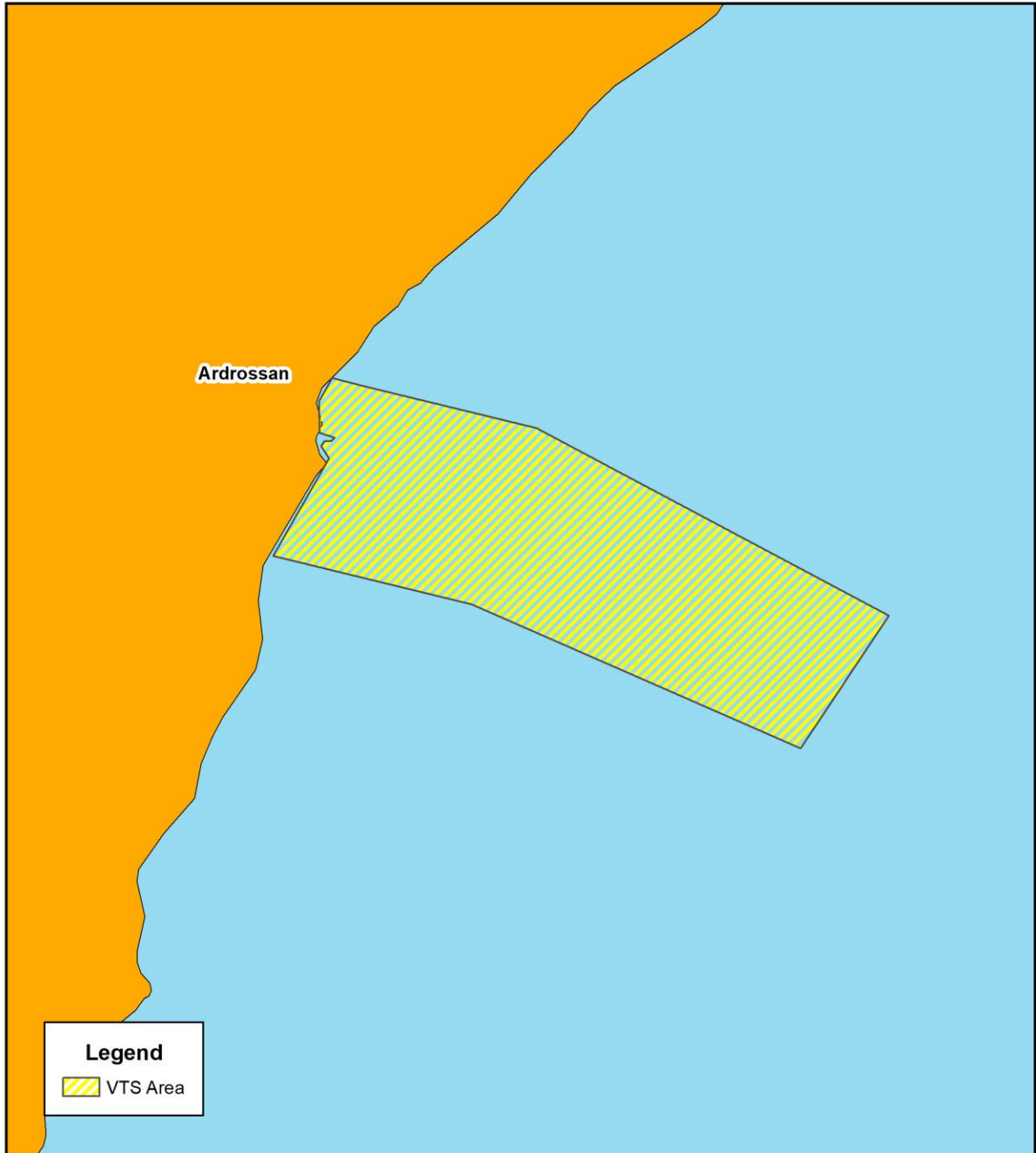
The subjacent land underlying and adjacent land extending from the waters, rivers, creeks and inlets to high water mark of that portion of the western coast of Gulf St. Vincent bounded as follows:

- Commencing at a point on high water mark distant 0.5 nautical miles north-north-easterly of the centreline of the Viterra jetty;
- then by a line bearing $106^{\circ}25'T$ to its intersection with the eastern boundary of the harbor of Ardrossan; then east-south-easterly to a point being $34^{\circ}27'14''S$, $137^{\circ}58'38''E$;
- then south-south-westerly to a point being $34^{\circ}28'05''S$, $137^{\circ}58'04''E$;
- then west-north-westerly to the south east corner of the harbor of Ardrossan;
- then by the southern boundary of the harbor of Ardrossan west-north-westerly, north-north-easterly (along high water mark) to the point of commencement.

VTS Area - Ardrossan



Australian Government
Australian Maritime Safety Authority



This map was produced by the
Australian Maritime Safety Authority
GPO Box 2181
Canberra, ACT, 2601
© Commonwealth of Australia 2025

Author: Kerrie Abercrombie
Date: 11/7/2025
Map name: vts_chartlet_ardrossan_VTS.mxd

Base Map
ga_coast100k_gda94_pl

Data Sources
VTS area provided by Flinders Ports

Map not to be used for navigational purposes.

0 0.45 0.9 1.35 1.8
Nautical Miles



SCHEDULE 3 – Klein Point VTS Area

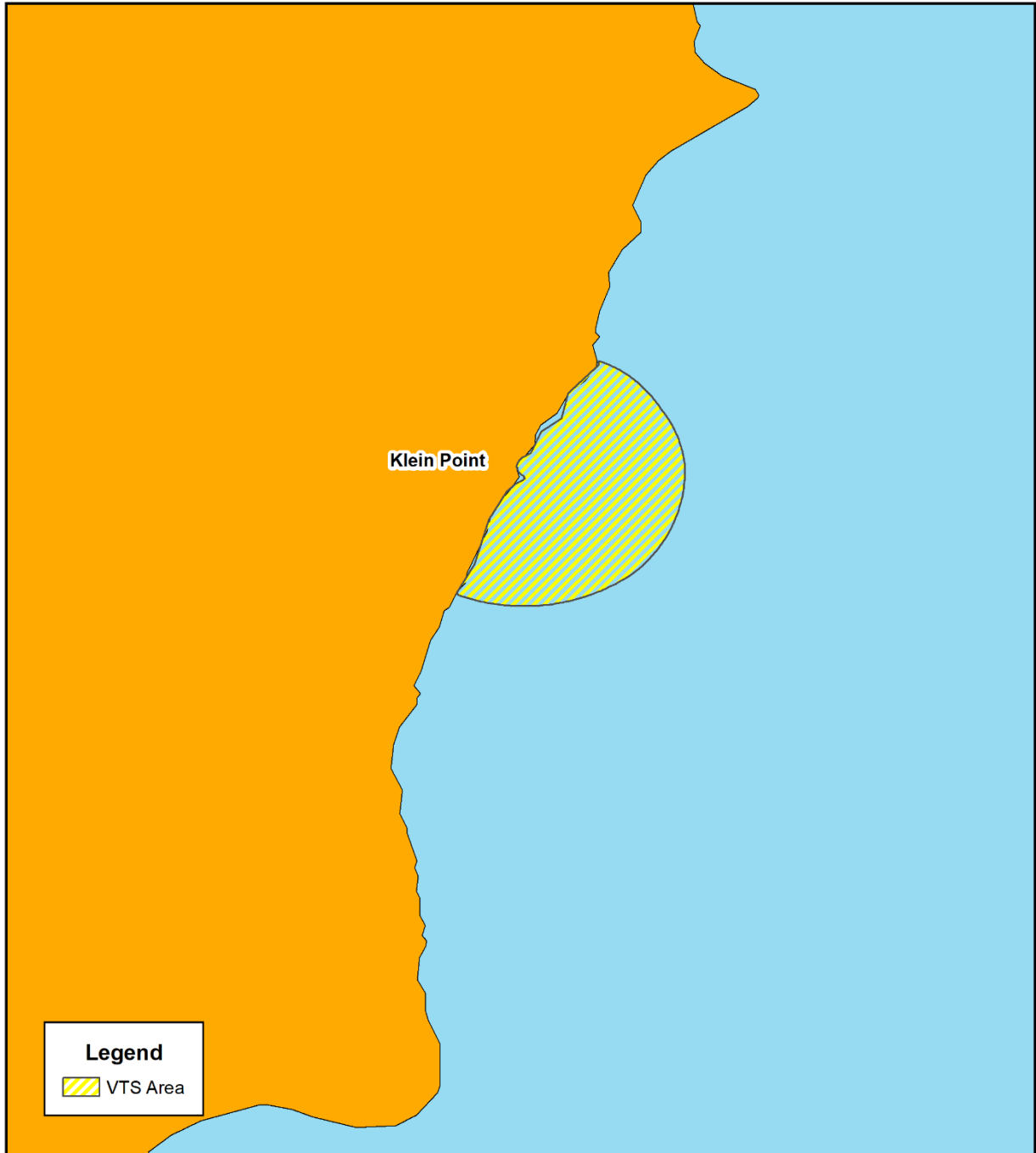
Description of the VTS Area approved by AMSA

The subjacent land underlying and adjacent land extending from the waters, rivers, creeks and inlets to high water mark of that portion of the western coast of Gulf St. Vincent within 1 nautical mile seaward of the intersection of high water mark and the Klein Point jetty.

VTS Area - Klein Point



Australian Government
Australian Maritime Safety Authority

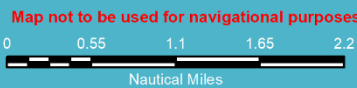


This map was produced by the
Australian Maritime Safety Authority
GPO Box 2181
Canberra, ACT, 2601
© Commonwealth of Australia 2025

Author: Kerrie Abercrombie
Date: 11/7/2025
Map name: vts_chartlet_klein_point_VTS.mxd

Base Map
ga_coast100k_gda94_pl

Data Sources
VTS area provided by Flinders Ports



SCHEDULE 4 – Port Giles VTS Area

Description of the VTS Area approved by AMSA

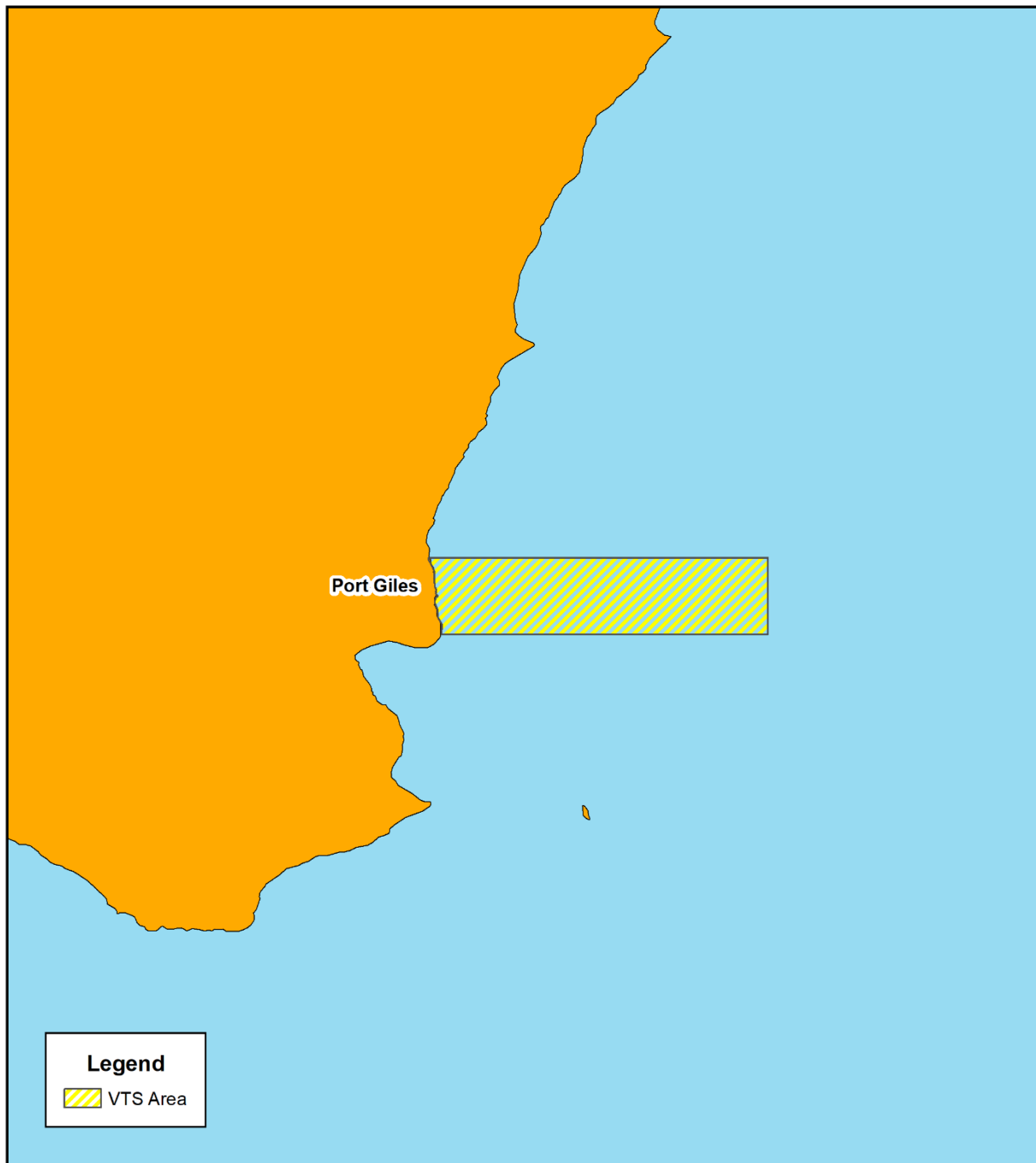
The subjacent land underlying and adjacent land extending from the waters, rivers, creeks and inlets to high water mark of that portion of the western coast of Gulf St. Vincent bounded as follows:

- Commencing at a point on high water mark 1 nautical mile due north of the intersection of the centre line of the Port Giles jetty with high water mark;
- then by a line bearing due east from high water mark for 7.2 nautical miles ($35^{\circ}0'18.6''\text{S}$, $137^{\circ}54'24.3''\text{E}$);
- then on a line bearing due south for 2 nautical miles ($35^{\circ}2'18.9''\text{S}$, $137^{\circ}54'23.7''\text{E}$); then west to a point $35^{\circ}2'19.2''\text{S}$, $137^{\circ}45'50.9''\text{E}$;
- then generally west-north-westerly to the south west corner of the harbor of Port Giles (on high water mark);
- then generally northerly along high water mark to the point of commencement.

VTS Area - Port Giles



Australian Government
Australian Maritime Safety Authority

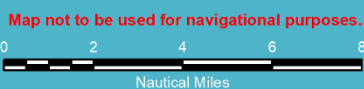


This map was produced by the
Australian Maritime Safety Authority
GPO Box 2181
Canberra, ACT, 2601
© Commonwealth of Australia 2025

Author: Kerrie Abercrombie
Date: 11/7/2025
Map name: vts_chartlet_Port Giles.mxd

Base Map
ga_coast100k_gda94_pl

Data Sources
VTS area provided by Flinders Ports



SCHEDULE 5 – Port Lincoln VTS Area

Description of the VTS Area approved by AMSA

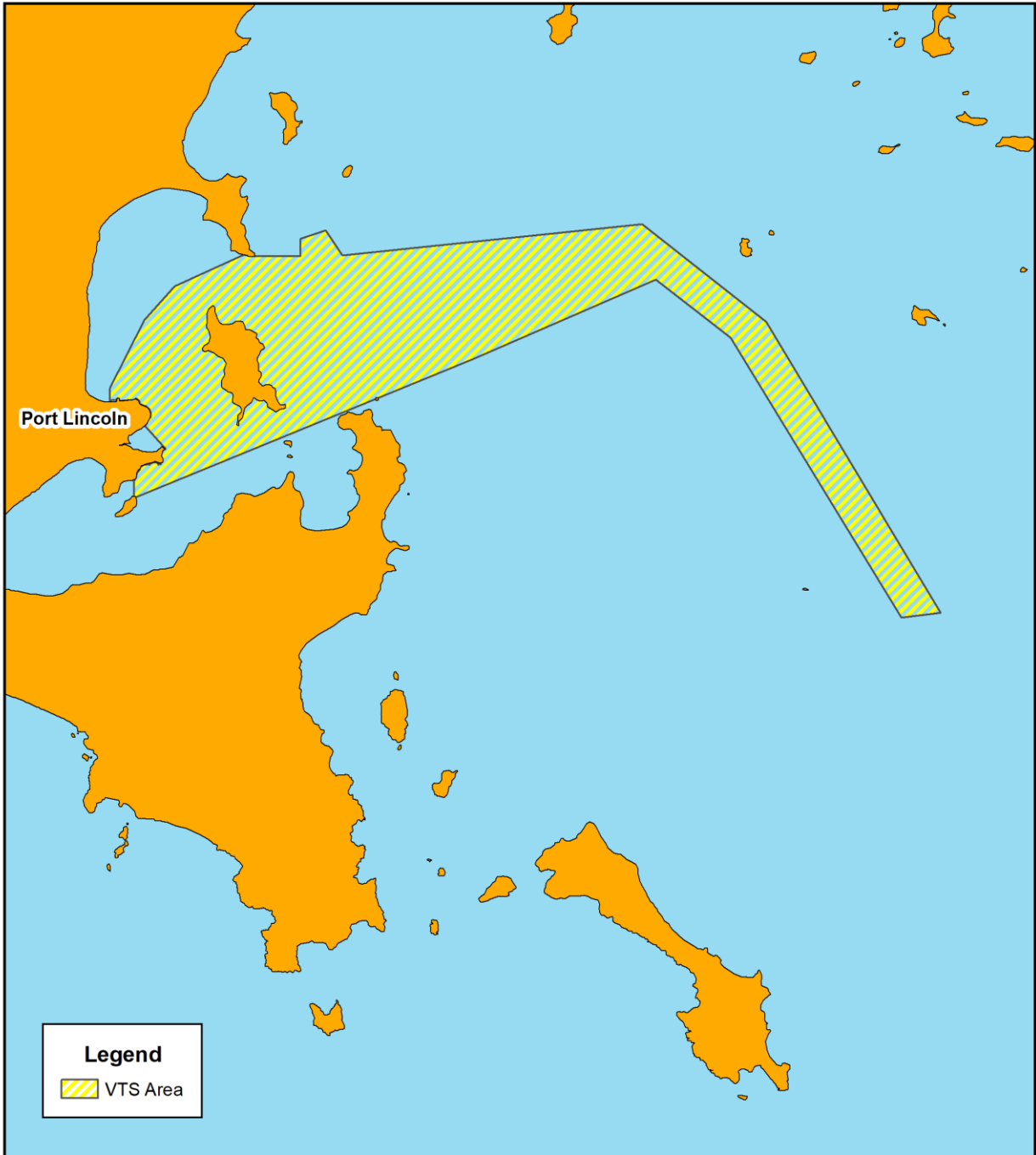
The subjacent land underlying and adjacent land extending from the waters, rivers, creeks and inlets to high water mark of Port Lincoln bounded as follows:

- Commencing at the intersection with high water mark of a line running due north from the north-east corner of King and Porter Streets;
- then due north along said line to its intersection with a line 0.13 nautical mile from and parallel to the port side of the maintained channel;
- then generally north-easterly by a line 0.13 nautical mile from and parallel to the port side of the maintained channel to a point adjacent to the entrance beacon;
- then continuing generally north-easterly along the production of that line to its intersection with low water mark;
- then along low water mark to Point Boston; then due east to a point 34°38'56.3"S, 135°57'39"E; then due north to a point 34°38'25.2"S, 135°57'39"E;
- then generally north-easterly to a point 34°38'10.2"S, 135°58'24"E;
- then generally south-easterly to a point 34°38.93'S, 135°58.9'E;
- then generally east-north-easterly to a point 34°37.99'S, 136°07.87'E;
- then generally south-easterly to a point 34°40.91'S, 136°11.57'E;
- then generally south-south-easterly to a point 34°49.61'S, 136°16.78'E;
- then generally westerly to a point 34°49.75'S, 136°15.61'E;
- then generally north-north-westerly to a point 34°41.39'S, 136°10.51'E;
- then generally north-westerly to a point 34°39.65'S, 136°08.27'E;
- then generally south westerly along a line bearing 246.5° to the northern tip of Grantham Island;
- then due north along a line to its intersection with high water mark adjacent Section 187 Hundred of Lincoln;
- then generally north-easterly and northerly along high water mark to Billy Lights Point;
- then by a line generally north-westerly to its intersection with high water mark and the western corner of Allotment 10 in Deposited Plan 57370;
- then generally northerly and westerly along high water mark to the point of commencement.

VTS Area - Port Lincoln



Australian Government
Australian Maritime Safety Authority



This map was produced by the
Australian Maritime Safety Authority
GPO Box 2181
Canberra, ACT, 2601
© Commonwealth of Australia 2025

Author: Kerrie Abercrombie
Date: 11/7/2025
Map name: vts_chartlet_Port Lincoln.mxd

Base Map
ga_coast100k_gda94_pl

Data Sources
VTS area provided by Flinders Ports

Map not to be used for navigational purposes.



SCHEDULE 6 – Spencer VTS Area

Description of the VTS Area approved by AMSA

The subjacent land underlying and adjacent land extending from the waters, rivers, creeks and inlets to high water mark of Spencer Gulf bounded as follows:

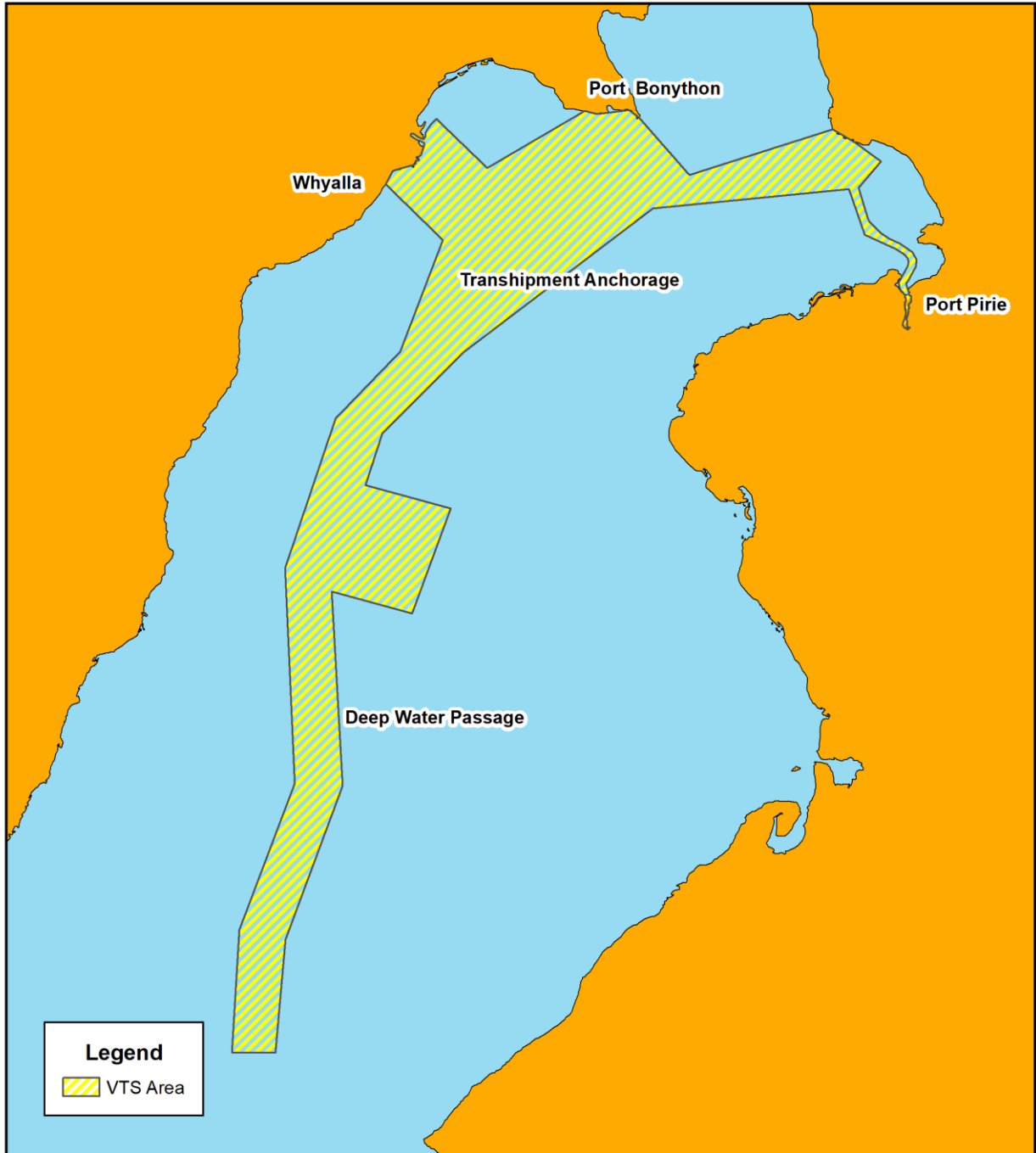
- Commencing at Ward Point being the intersection of the north-western corner of the harbor of Port Pirie and high water mark;
- then generally south-easterly along a line to the Port Germein jetty light;
- then generally south-westerly along a line joining No.2 port beacon to the intersection point of a line 0.13 nautical mile from and parallel to the port side of the main channel;
- then generally southerly and south-easterly by a line 0.13 nautical mile from and parallel to the port side of the maintained channel to its intersection with high water mark;
- then generally southerly along high water mark to a point being the prolongation of the southern extremity of No.1 berth Port Pirie across the Port Pirie River;
- then generally south-westerly across the Port Pirie River along that prolongation to the southern extremity of No.1 berth Port Pirie;
- then generally north-westerly and northerly along high water mark to the northern extremity of No.10 berth;
- then generally westerly along the No.10 berth to its intersection with high water mark;
- then generally northerly along high water mark to the intersection of a line 0.13 nautical mile from and parallel to the starboard side of the maintained channel;
- then generally north and north-westerly by a line 250m from and parallel to the starboard side of the maintained channel to a point south-west of the No.17 starboard beacon; then by a line bearing 299°35'T for 1.5 nautical miles;
- then by a line bearing 345°16'T to the intersection point of a line bearing 264°30'T from No.1 starboard beacon; then by a line bearing 264°30'T to the intersection with the south-western limit of the harbor of Port Pirie;
- then generally south-westerly to a point being 33°12'S, 137°38'06"E; then generally south-westerly to a point 33°16'14"S, 137°33'52"E;
- then generally south-south-westerly to a point 33°18'54"S, 137°33'E; then generally east-south-easterly to a point 33°20'06"S, 137°37'24"E;
- then generally south-south-westerly to a point 33°25'30"S, 137°35'24"E;
- then generally west-north-westerly to a point 33°24'22"S, 137°31'16"E; then generally southerly to a point 33°34'22"S, 137°31'50"E;
- then generally south-south-westerly to a point 33°42'18"S, 137°28'53"E; then generally southerly to a point 33°48'08"S, 137°28'22"E;
- then due west for 1.88 nautical miles;
- then generally northerly to a point 33°41'48"S, 137°26'30"E;
- then generally north-north-easterly to a point 33°34'16"S, 137°29'21"E;
- then generally northerly to a point 33°23'10"S, 137°28'52"E;
- then generally north-north-easterly to a point 33°15'27"S, 137°31'28"E;
- then generally north-easterly to a point 33°12'S, 137°34'48"E;
- then generally north-north-easterly to the southern corner of the harbor of Whyalla;
- then along the south-western boundary of the harbor of Whyalla to the high water;
- then generally north-easterly following high water mark to the northern corner of the harbor of Whyalla;

- then south-westerly along the north-eastern boundary of the harbor of Whyalla for a distance of 4 nautical miles;
- then generally north-easterly to the high water mark at Black Point;
- then generally easterly along high water mark to the intersection with a straight line bearing 143.5° T from Point Lowly Light;
- then along the latter line for a distance of 3.4 nautical miles to the northern boundary of the harbor of Port Pirie;
- then generally east-north-easterly along the northern boundary of the harbor of Port Pirie to the point of commencement.

VTS Area - Spencer



Australian Government
Australian Maritime Safety Authority

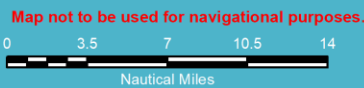


This map was produced by the
Australian Maritime Safety Authority
GPO Box 2181
Canberra, ACT, 2601
© Commonwealth of Australia 2025

Author: Kerrie Abercrombie
Date: 11/7/2025
Map name: vts_chartlet_spencer.mxd

Base Map
ga_coast100k_gda94_pl

Data Sources
VTS area provided by Flinders Ports



SCHEDULE 7 – Thevenard VTS Area

Description of the VTS Area approved by AMSA

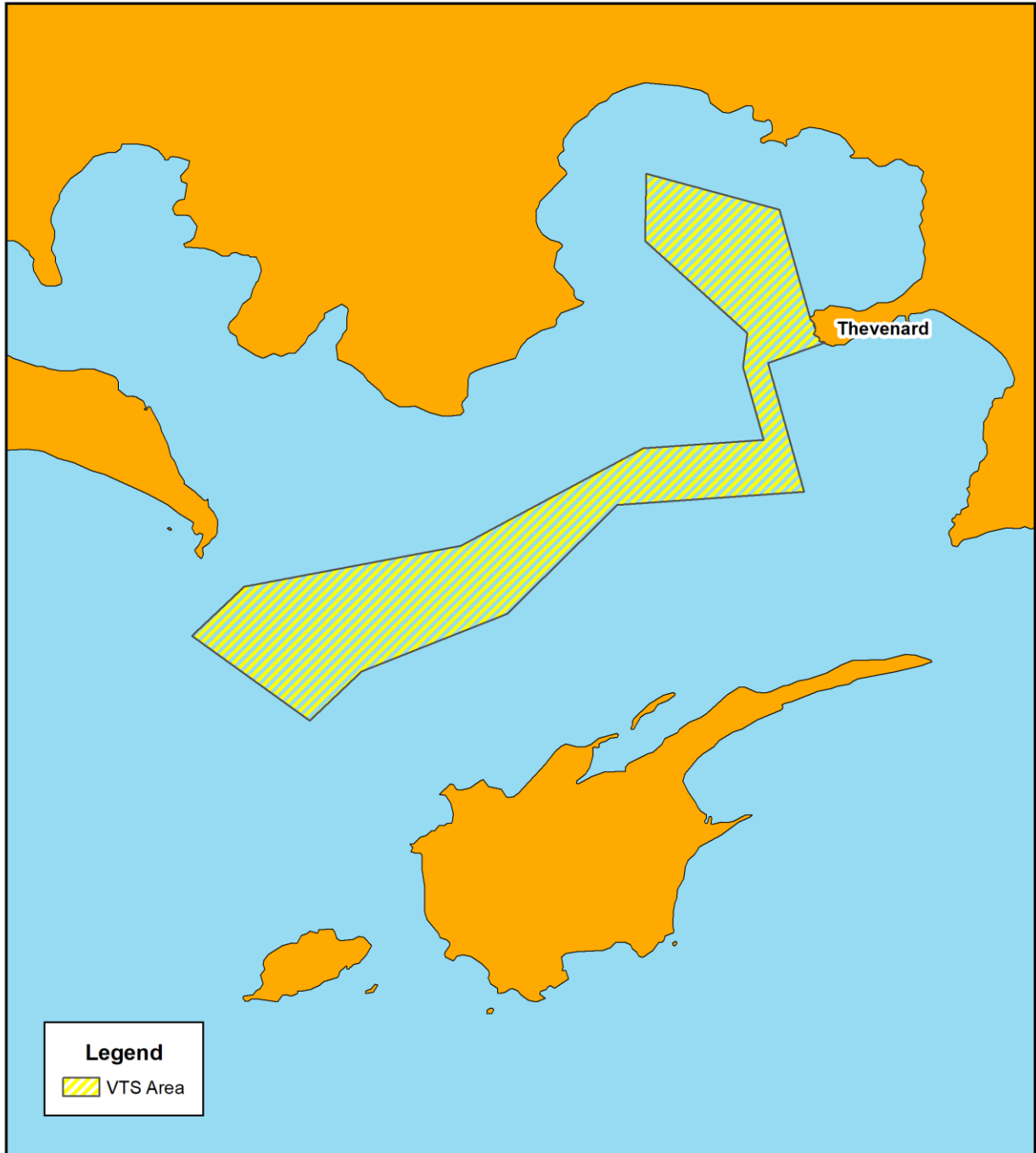
The subjacent land underlying and adjacent land extending from the waters, rivers, creeks and inlets to high water mark of Denial Bay, Murat Bay and Bosanquet Bay bounded as follows:

- Commencing at a point at the intersection of high water mark and the north-eastern corner of Allotment 7 in Deposited Plan 57833;
- then generally southerly along high water mark to the south-western corner of Section 275 Hundred of Bonython;
- then generally west-south-westerly along a line joining No.25 starboard beacon to the intersection point of a line 0.13 nautical mile from and parallel to the starboard side of the maintained channel;
- then by that line bearing 166°34'T for 2 nautical miles;
- then by a line bearing 264°30'T for 2.4 nautical miles;
- then by a line bearing 220°T to its intersection with the south-western boundary of the harbor of Thevenard;
- then to a point 32°14'06"S, 133°31'42"E; then to a point 32°14'51"S, 133°30'54"E;
- then to a point 32°13'33"S, 133°29'06"E; then to a point 32°12'48"S, 133°29'54"E;
- then to a point 2 nautical miles due south of Cape Beaufort;
- then by a line bearing 57°T to the intersection with a line bearing 46°T from the entrance beacon;
- then generally easterly by a line joining No.20 port beacon to the intersection point of a line 0.13 nautical mile from and parallel to the port side of the maintained channel;
- then by a series of lines 0.13 nautical mile from and parallel to the port side of the maintained channel to the intersection point with a line bearing 316°T from Cape Vivonne;
- then by that line bearing 316°T for 1.9 nautical miles;
- then by a line bearing true north to the intersection point on a line joining Denial Bay jetty and Ceduna jetty;
- then along the said line generally east-south-easterly to the intersection point of a line joining Low Point and the point of commencement;
- then generally southerly along that line to the point of commencement.

VTS Area - Thevenard



Australian Government
Australian Maritime Safety Authority



This map was produced by the
Australian Maritime Safety Authority
GPO Box 2181
Canberra, ACT, 2601
© Commonwealth of Australia 2025

Author: Kerrie Abercrombie
Date: 11/7/2025
Map name: vts_chartlet_thevenard.mxd

Base Map
ga_coast100k_gda94_pl

Data Sources
VTS area provided by Flinders Ports

Map not to be used for navigational purposes.

Nautical Miles



SCHEDULE 8 – Wallaroo VTS Area

Description of the VTS Area approved by AMSA

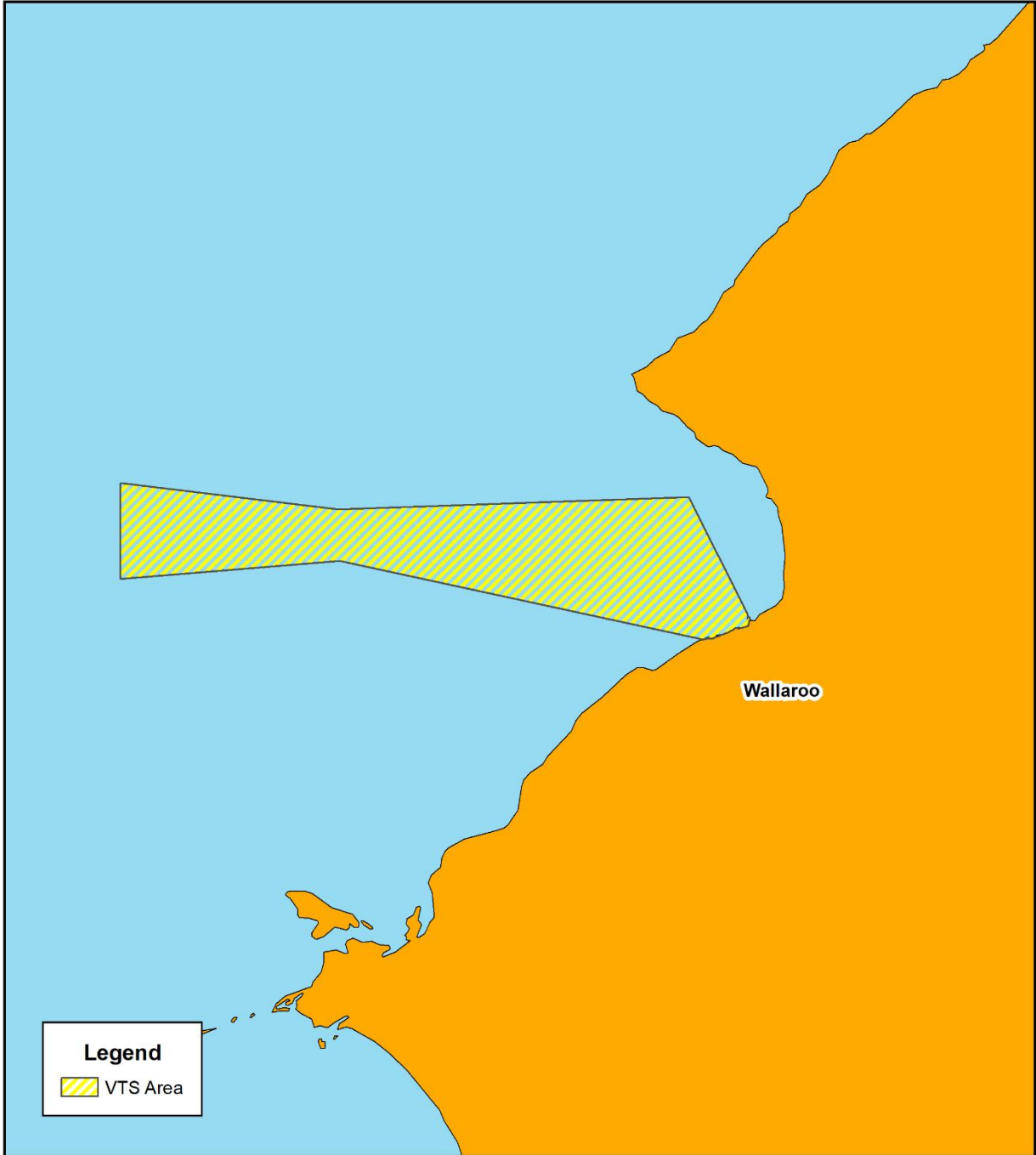
The subjacent land underlying and adjacent land extending from the waters, rivers, creeks and inlets to high water mark of that part of Wallaroo Bay bounded as follows:

- Commencing at a point on high water mark intersected by a line 0.08 nautical mile north-east and parallel to the northern face of the shipping pier;
- then generally north-westerly along a line joining high water mark at the south-west extremity of Point Riley to the intersection with a line being the production generally easterly of a line 0.13 nautical mile from and parallel to the port side of the maintained channel;
- then generally westerly along that line to its intersection with the western boundary of the harbor of Wallaroo at a point being 33°54'13.6"S, 137°32'28.2"E;
- then generally west-north-westerly to a point being 33°53'54.5"S, 137°29'51"E;
- then southerly to a point being 33°55'04"S, 137°29'51"E;
- then generally east-north-easterly to the western boundary of the harbor of Wallaroo at a point being 33°54'50.8"S, 137°32'29"E;
- then generally east-south-easterly along a line joining the front lead to the intersection with high water mark;
- then generally north-easterly along high water mark to the point of commencement.

VTS Area - Wallaroo



Australian Government
Australian Maritime Safety Authority



This map was produced by the
Australian Maritime Safety Authority
GPO Box 2181
Canberra, ACT, 2601
© Commonwealth of Australia 2025

Author: Kerrie Abercrombie
Date: 11/7/2025
Map name: vts_chartlet_Wallaroo.mxd

Base Map
ga_coast100k_gda94_pl

Data Sources
VTS area provided by Flinders Ports

Map not to be used for navigational purposes.

0 0.85 1.7 2.55 3.4
Nautical Miles

