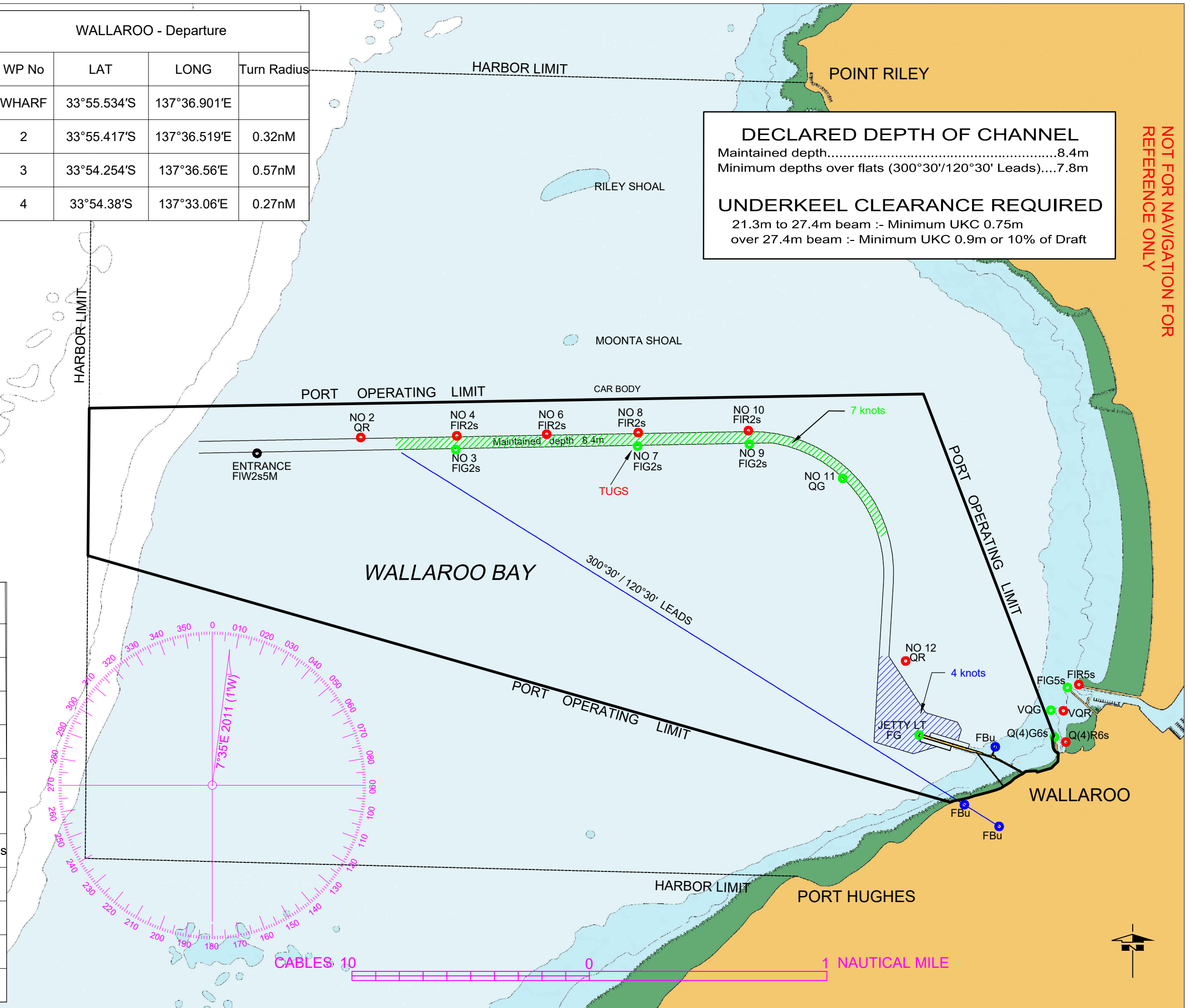


	MASTER PILOT EXCHANGE								
	WALLAROO								
Date							Time		
Ship Name							Pilot		
From							To		
Drafts	FWD				AFT			Air Draft	
LOA				Beam			Bow To Bridge		
ENGINEERING CHECKS					ENVIRONMENTALS				
ME Tested:	Yes / No				Time	HT	TIDE HOURLY RANGE:		
Bow Thruster:	Yes / No		KW / H.P	HW			Time	HT	Range
Stern Thruster:	Yes / No		KW / H.P	LW					
Steering Tested:	Yes / No				Channel Depth				
Steering Motors:	1	2	More than 2	Tide					
Gyro Compass Error				High / Low	Total Depth				
Anchors Cleared	P	S	More than 2	Max Draft			Wind		
Nav Equipment Operational	Yes / No				UKC		Direction		
Engine Load Program	Yes / No						Speed		
TUGS/ LAUNCHES / MOORINGS						VHF CH 6 / 8		Defects/Wx Warnings:	
								Notes:	
								1. CHART IS NOT SUITABLE FOR NAVIGATION PURPOSES. 2. COURSES ON THE CHART ARE AN INDICATION ONLY. 3. BRIDGE TEAM TO CONTINUOUSLY MONITOR THAT THE VESSEL IS PROCEEDING ACCORDING TO THE PLAN AND IMMEDIATELY BRING TO THE ATTENTION OF THE PILOT ANY MATTER WHICH CAUSES CONCERN. 4. CHART DATUM IS LAT - REFER TO AUS133. 5. AIS TO BE ON AND IN UNDERWAY MODE 6. PLAN MAY ALTER DUE TO OPERATIONAL REQUIREMENTS AND DEVIATIONS WILL BE DISCUSSED.	
TUGS USE OWN LINES									
LOWER TUGS LINE SLOWLY						*FLINDERS PORTS IS A SMOKE FREE WORK PLACE. PLEASE DO NOT SMOKE ON THE BRIDGE WHILST THE VESSEL IS UNDER PILOTAGE			
DO NOT USE HEAVY WEIGHTS ON HEAVING LINE									
DO NOT DROP TOW LINES IN WATER									
ADDITIONAL INFORMATION:									
MASTER SIGNATURE					PILOT SIGNATURE				
FP5405 - CURRENT AS AT 27/09/2022					TIME		DATE		

WALLAROO - Arrivals				WALLAROO - Departure			
WP No	LAT	LONG	Turn Radius	WP No	LAT	LONG	Turn Radius
1	33°54.53'S	137°31.557'E		WHARF	33°55.534'S	137°36.901'E	
2	33°54.448'S	137°35.837'E	0.5nM	2	33°55.417'S	137°36.519'E	0.32nM
3	33°54.562'S	137°36.62'E	0.5nM	3	33°54.254'S	137°36.56'E	0.57nM
4	33°54.904'S	137°36.967'E	0.5nM	4	33°54.38'S	137°33.06'E	0.27nM
	33°55.213'S	137°37.103'E	0.25nM				
	33°55.566'S	137°36.992'E	278m				
	33°55.509'S	137°36.742'E	300m				

WALLAROO - Flats Arrivals			
WP No	LAT	LONG	Turn Radius
1	33° 54.53'S	137° 31.557'E	
2	33° 54.428'S	137° 34.149'E	1nM
3	33° 55.309'S	137° 35.948'E	1nM
WHARF	33° 55.534'S	137°36.901'E	

WALLAROO - Flats Departure			
WP No	LAT	LONG	Turn Radius
WHARF	33° 54.53'S	137° 31.557'E	
2	33° 54.428'S	137° 34.149'E	1nM
3	33° 55.309'S	137° 35.948'E	1nM
4	33° 55.534'S	137°36.901'E	



DECLARED DEPTH OF CHANNEL
 Maintained depth.....8.4m
 Minimum depths over flats (300°30'/120°30' Leads)....7.8m

UNDERKEEL CLEARANCE REQUIRED
 21.3m to 27.4m beam :- Minimum UKC 0.75m
 over 27.4m beam :- Minimum UKC 0.9m or 10% of Draft

NOT FOR NAVIGATION FOR REFERENCE ONLY