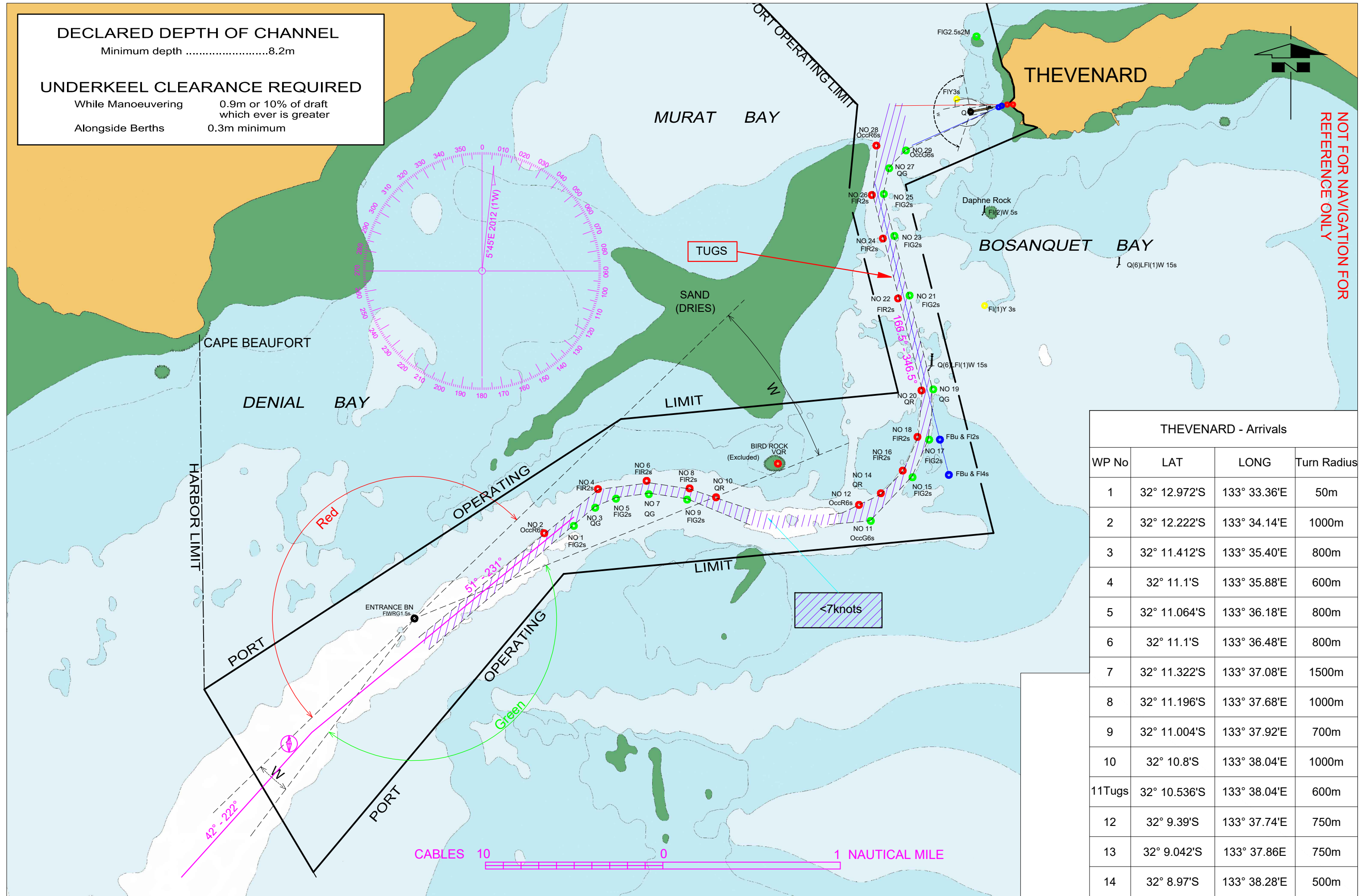


	MASTER PILOT EXCHANGE					
	THEVENARD					
Date					Time	
Ship Name					Pilot	
From					To	
Drafts	FWD			AFT	Air Draft	
LOA			Beam			Bow To Bridge
ENGINEERING CHECKS			ENVIRONMENTALS			
ME Tested:	Yes / No			Time	HT	TIDE HOURLY RANGE:
Bow Thruster:	Yes / No		KW / H.P	HW		Time HT Range
Stern Thruster:	Yes / No		KW / H.P	LW		
Steering Tested:	Yes / No			Channel Depth		
Steering Motors:	1 / 2 / More than 2			Tide		
Gyro Compass Error			High / Low	Total Depth		
Anchors Cleared	P / S / More than 2			Max Draft		Wind
Nav Equipment Operational	Yes / No			UKC		Direction
Engine Load Program	Yes / No					Speed
TUGS/ LAUNCHES / MOORINGS				VHF CH 6 / 8		Defects/Wx Warnings:
				<p>Notes:</p> <ol style="list-style-type: none"> CHART IS NOT SUITABLE FOR NAVIGATION PURPOSES. COURSES ON THE CHART ARE AN INDICATION ONLY. BRIDGE TEAM TO CONTINUOUSLY MONITOR THAT THE VESSEL IS PROCEEDING ACCORDING TO THE PLAN AND IMMEDIATELY BRING TO THE ATTENTION OF THE PILOT ANY MATTER WHICH CAUSES CONCERN. CHART DATUM IS LAT - REFER TO AUS120 & AUS122. OVERSIZE VESSEL NOT TO EXCEED A MAXIMUM DRAFT OF 9.0m IF ALONGSIDE THE NORTH BERTH AND 9.3m IF ALONGSIDE THE SOUTH BERTH. AIS TO BE ON AND IN UNDERWAY MODE PLAN MAY ALTER DUE TO OPERATIONAL REQUIREMENTS AND DEVIATIONS WILL BE DISCUSSED. VESSEL NOT TO SWING OUT GANGWAY UNTIL FAST. 		
TUGS USE OWN LINES				*FLINDERS PORTS IS A SMOKE FREE WORK PLACE. PLEASE DO NOT SMOKE ON THE BRIDGE WHILST THE VESSEL IS UNDER PILOTAGE		
LOWER TUGS LINE SLOWLY						
DO NOT USE HEAVY WEIGHTS ON HEAVING LINE						
DO NOT DROP TOW LINES IN WATER						
ADDITIONAL INFORMATION:						
MASTER SIGNATURE				PILOT SIGNATURE		
FP5400 - CURRENT AS AT 29/08/2022				TIME	DATE	

DECLARED DEPTH OF CHANNEL
 Minimum depth8.2m

UNDERKEEL CLEARANCE REQUIRED

While Manoeuvring	0.9m or 10% of draft which ever is greater
Alongside Berths	0.3m minimum



NOT FOR NAVIGATION FOR
REFERENCE ONLY

THEVENARD - Arrivals			
WP No	LAT	LONG	Turn Radius
1	32° 12.972'S	133° 33.36'E	50m
2	32° 12.222'S	133° 34.14'E	1000m
3	32° 11.412'S	133° 35.40'E	800m
4	32° 11.1'S	133° 35.88'E	600m
5	32° 11.064'S	133° 36.18'E	800m
6	32° 11.1'S	133° 36.48'E	800m
7	32° 11.322'S	133° 37.08'E	1500m
8	32° 11.196'S	133° 37.68'E	1000m
9	32° 11.004'S	133° 37.92'E	700m
10	32° 10.8'S	133° 38.04'E	1000m
11Tugs	32° 10.536'S	133° 38.04'E	600m
12	32° 9.39'S	133° 37.74'E	750m
13	32° 9.042'S	133° 37.86'E	750m
14	32° 8.97'S	133° 38.28'E	500m