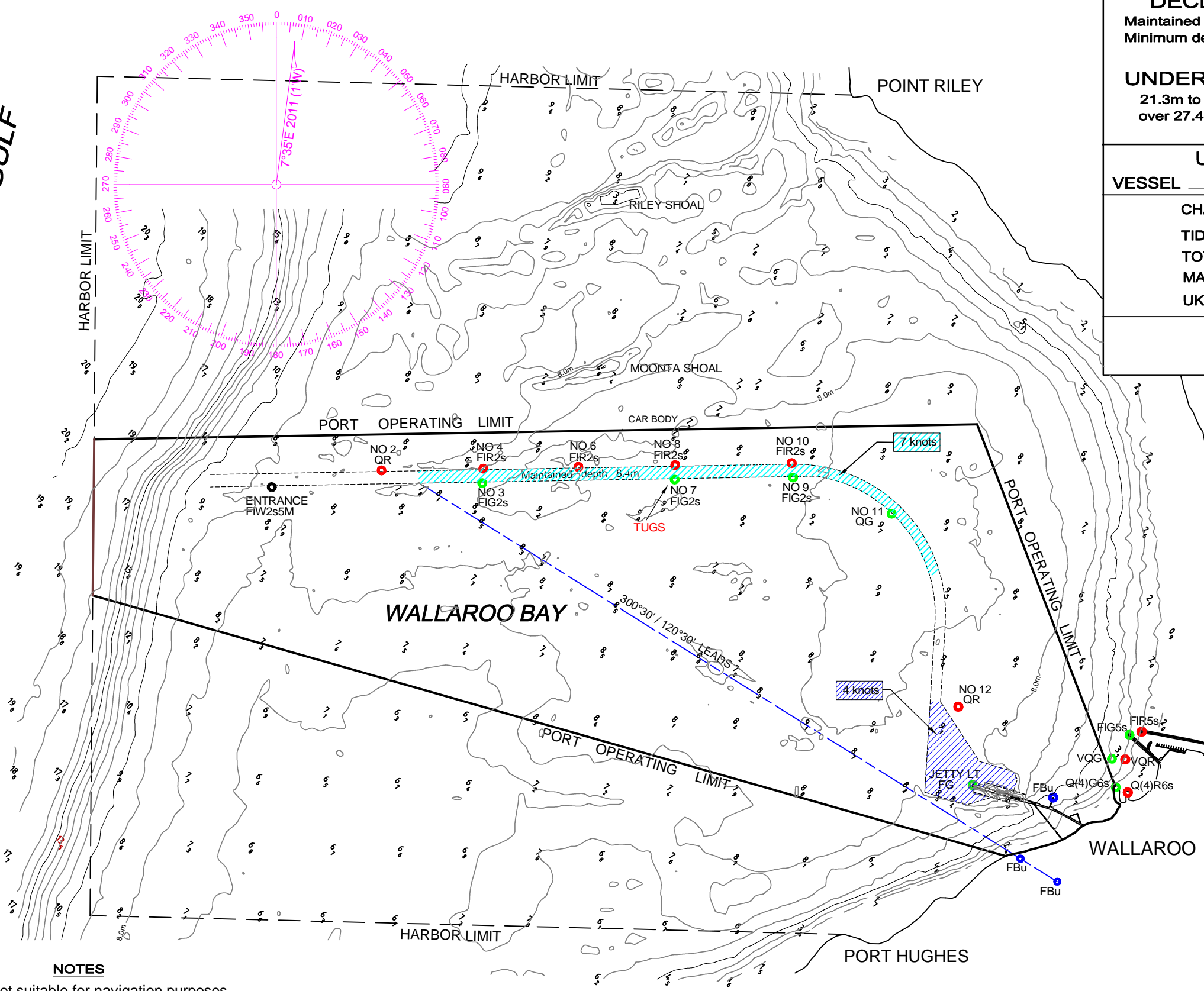


SPENCER GULF



DECLARED DEPTH OF CHANNEL
 Maintained depth.....8.4m
 Minimum depths over flats (300°30'/120°30' Leads)....7.8m

UNDERKEEL CLEARANCE REQUIRED
 21.3m to 27.4m beam :- Minimum UKC 0.75m
 over 27.4m beam :- Minimum UKC 0.9m or 10% of Draft

UNDER KEEL CLEARANCE

VESSEL _____ DATE _____

CHANNEL DEPTH _____

TIDE + _____

TOTAL _____

MAXIMUM DRAFT - _____

UKC _____

REMARKS _____

Time	Height of Tide	Hourly Range

The courses and speed limits shown here reflect the leads and speed requirements according to regulations. Variations will become necessary due to the requirements of vessel types and prevailing weather conditions. Vessel not to swing out gangway until fast.

In acknowledgement of Master/Pilot exchange.

Pilot Master

Flinders Ports
SOUTH AUSTRALIA

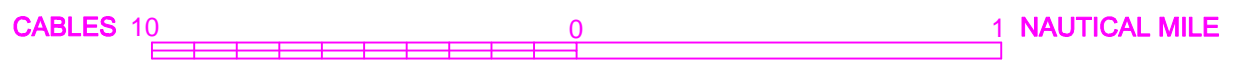
WALLAROO
PILOT PASSAGE PLAN

LOC 4531	TYPE 13	SHEET 1 of 2
DRG. NO. FP0106	REV F	

SUPERSEDES DRG.

NOTES

- Chart is not suitable for navigation purposes.
- Courses on the chart are an indication only.
- Bridge team to continuously monitor that the vessel is proceeding according to the plan and immediately bring to the attention of the pilot any matter which causes concern.
- Chart datum is LAT - refer to AUS133
- Overhead clearance heights are in HAT.

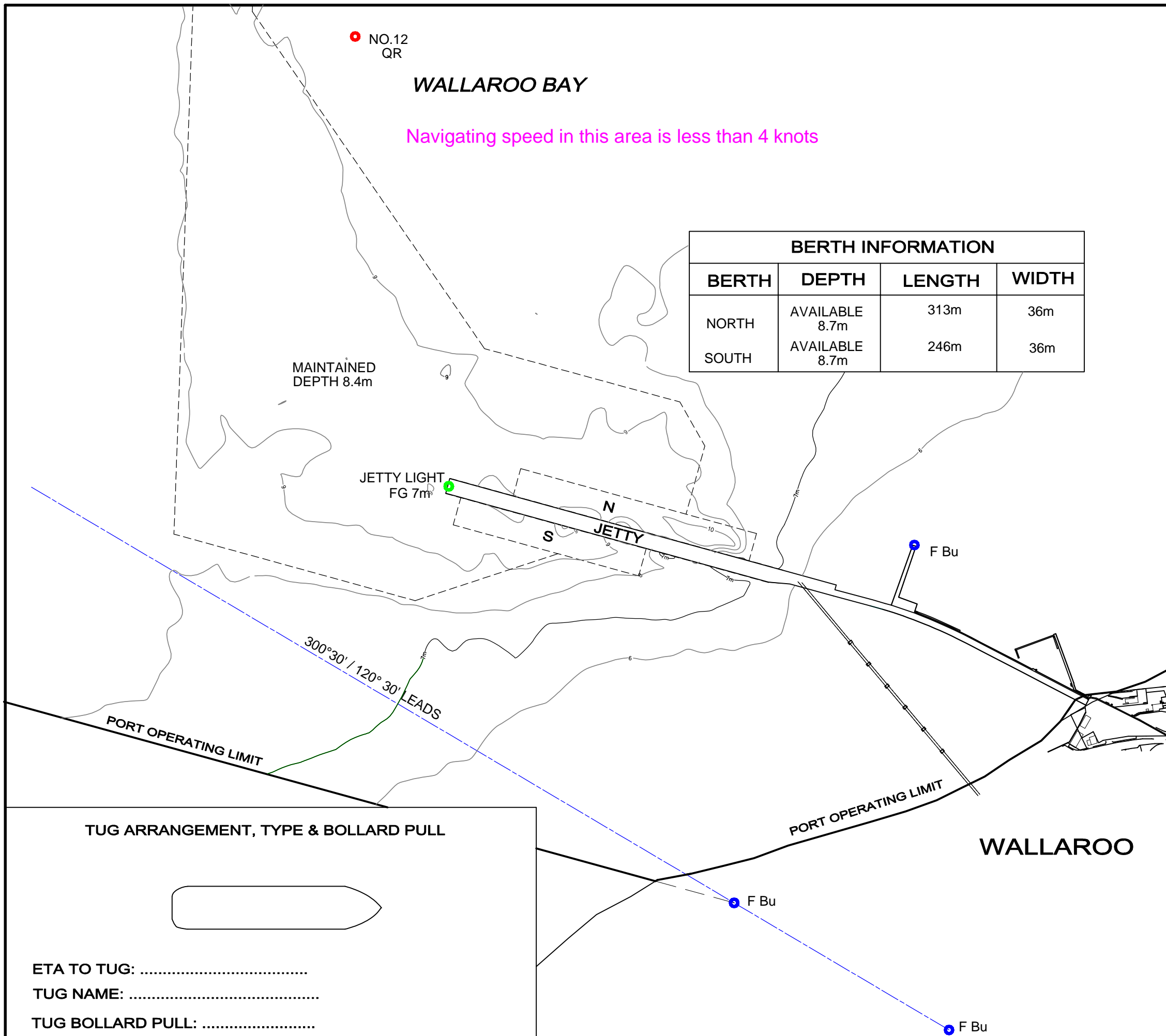


ALTERED	Add	DESCRIPTION OF REVISION
DATE	08/08/13	LIGHT CHARACTERISTICS ALTERED VIDE NtoM No.5 of 2009
CHECKED	pwh	WALL13_PILOT PASSAGE_1_REV F

**WALLAROO
PILOT PASSAGE
PLAN**

LAND USE COMMERCIAL	DRAWN Add 17/7/01
PARCEL IDENT.	CHECKED PWH 30/8/01
	C.T.
REFS. WALL13_PILOT PASSAGE_REV E.dwg	RHL 5/9/01 MANAGER SURVEY
JOB NO. A82636	SHEET 2 of 2
MAP SHEET 6430-III	DATUM AMG 84 ZONE 53
SCALE METRES	

BERTH INFORMATION			
BERTH	DEPTH	LENGTH	WIDTH
NORTH	AVAILABLE 8.7m	313m	36m
SOUTH	AVAILABLE 8.7m	246m	36m



- NOTES
1. CHART IS NOT SUITABLE FOR NAVIGATION PURPOSES.
 2. COURSES ON THE CHART ARE AN INDICATION ONLY.
 3. BRIDGE TEAM TO CONTINUOUSLY MONITOR THAT THE VESSEL IS PROCEEDING ACCORDING TO THE PLAN AND IMMEDIATELY BRING TO THE ATTENTION OF THE PILOT ANY MATTER WHICH CAUSES CONCERN.
 4. CHART DATUM IS LAT - REFER TO CHART AUS 133

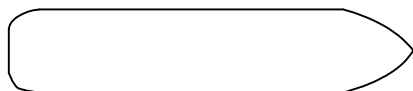
E	LIGHT CHARACTERISTICS CHANGED	Add	---
		08/08/13	---
REV.	DESCRIPTION OF REVISION	ALTERED	SURVEYOR
		DATE	C.H.S.
		CHECKED	M.S.

LOC	453	TYPE	13
-----	-----	------	----

DRG. NO.	FP0107
----------	---------------

SUPERSEDES DRG.	25419/78
-----------------	----------

TUG ARRANGEMENT, TYPE & BOLLARD PULL



ETA TO TUG:
TUG NAME:
TUG BOLLARD PULL: