

Flinders Ports  
SOUTH AUSTRALIA

# SPENCER GULF PILOT PASSAGE PLAN

LOC 437 TYPE 13 SHEET 1 of 2

DRG. NO. **FP1055** REV

REFS.  
WHYALLA16  
FP1055  
PILOT PASSAGE\_MGA53  
REV G.dwg

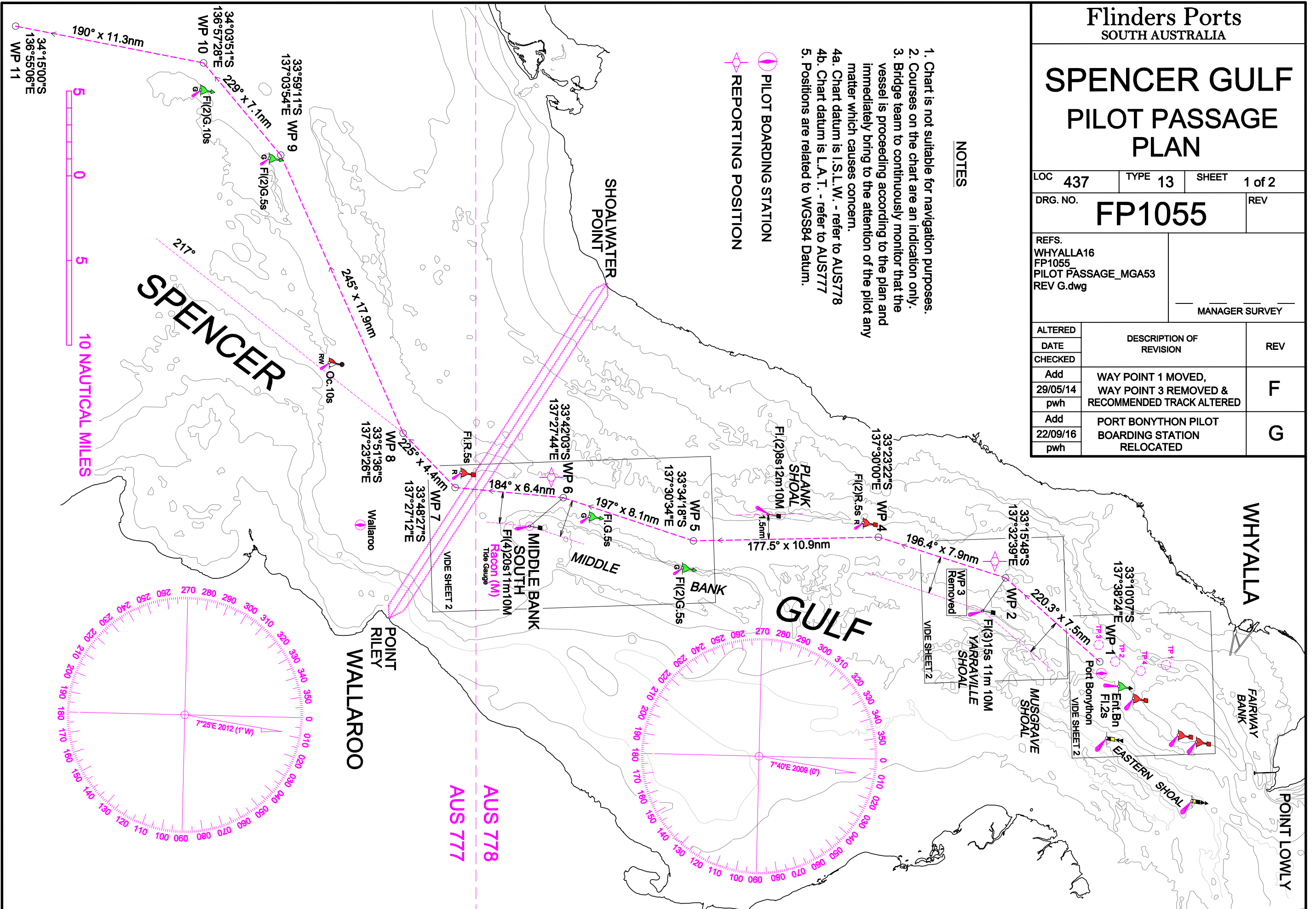
MANAGER SURVEY

ALTERED DATE CHECKED	DESCRIPTION OF REVISION	REV
Add 29/05/14 pwh	WAY POINT 1 MOVED, WAY POINT 3 REMOVED & RECOMMENDED TRACK ALTERED	F
Add 22/09/16 pwh	PORT BONYTHON PILOT BOARDING STATION RELOCATED	G

**NOTES**

1. Chart is not suitable for navigation purposes.
2. Courses on the chart are an indication only.
3. Bridge team to continuously monitor that the vessel is proceeding according to the plan and immediately bring to the attention of the pilot any matter which causes concern.
- 4a. Chart datum is I.S.L.W. - refer to AUST778
- 4b. Chart datum is L.A.T. - refer to AUST777
5. Positions are related to WGS84 Datum.

- PILOT BOARDING STATION
- REPORTING POSITION



# SPENCER GULF PILOT PASSAGE PLAN

LAND USE COMMERCIAL	DRAWN Add 19/09/06
PARCEL IDENT.	CHECKED pwh 19/09/06
	C.T.
REFS. WHYALLA16 FP1058 PILOT PASSAGE_SHT2 REV G.dwg	pwh 19/09/06 MANAGER SURVEY
JOB NO.	SHEET 2 of 2
MAP SHEET	DATUM

SCALE	METRES
-------	--------

- NOTES
- Chart is not suitable for navigation purposes.
  - Courses on the chart are an indication only.
  - Bridge team to continuously monitor that the vessel is proceeding according to the plan and immediately bring to the attention of the pilot any matter which causes concern.
  - Chart datum is I.S.L.W. - refer to AUS778
  - Minimum Static UKC to be 15%

- PILOT BOARDING STATION
- REPORTING POSITION

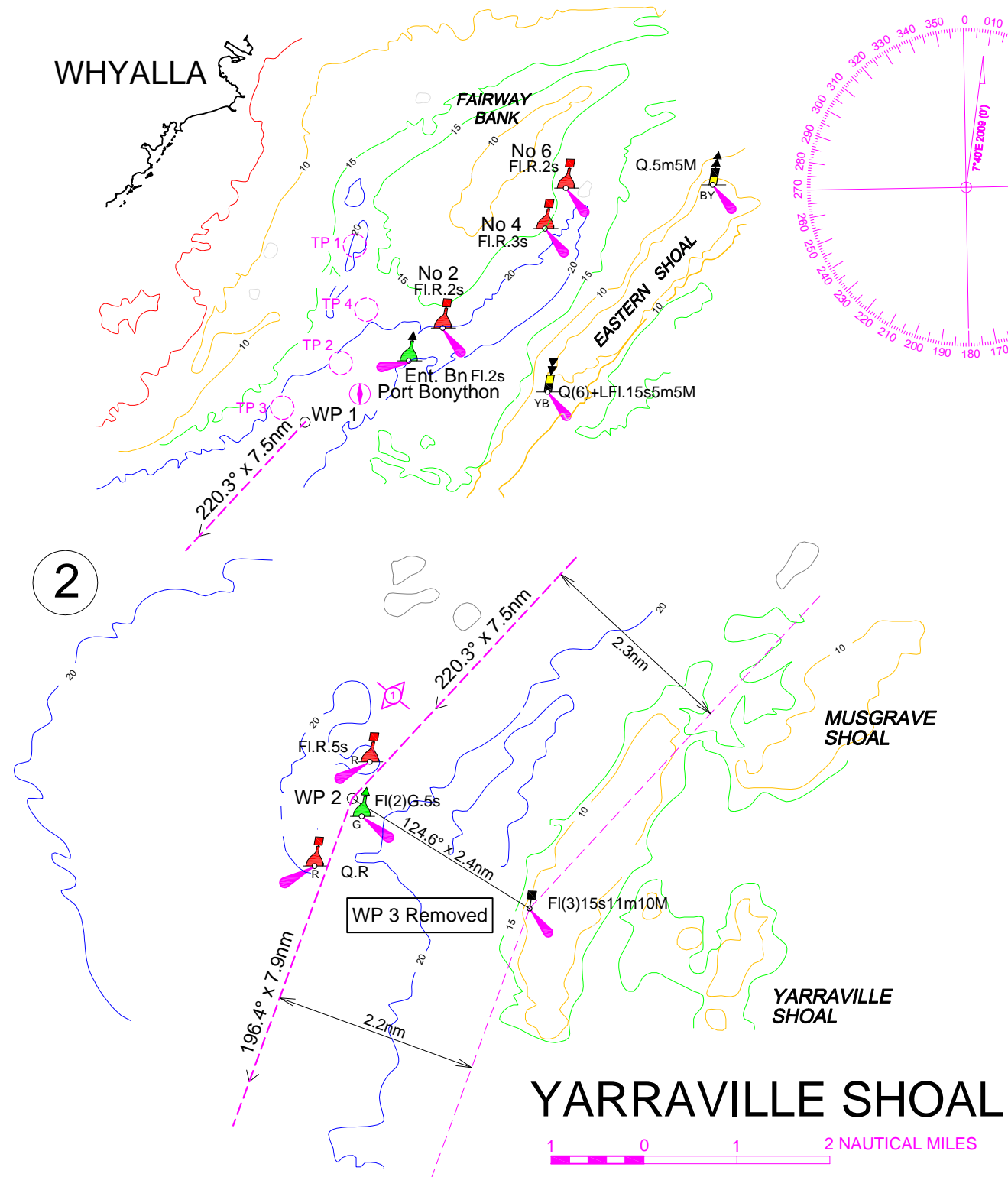
G	PORT BONYTHON PILOT BOARDING STATION RELOCATED	Add	
		22/09/16	
F	WAY POINT 1 MOVED WAY POINT 3 REMOVED REC. TRACK ALTERED	Add	
		29/05/14	
REV.	DESCRIPTION OF REVISION	ALTERED DATE	SURVEYOR C.H.S.
		CHECKED	M.S.

LOC	437	TYPE	13
-----	-----	------	----

DRG. NO.	FP1058	G
----------	--------	---

SUPERSEDES DRG.

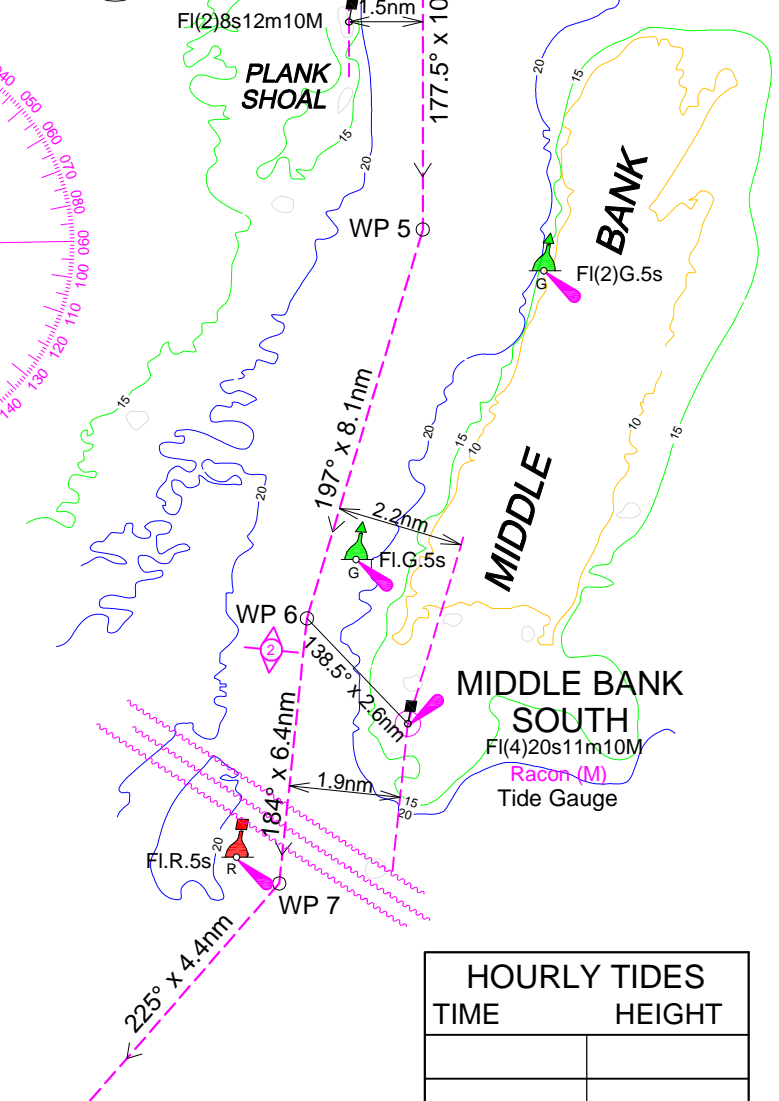
## 1 TRANSHIPMENT POINT



UNDER KEEL CLEARANCE	
VESSEL	DATE
CHANNEL DEPTH	20.0m
TIDE (WHYALLA) +	
TOTAL	
MAXIMUM DRAFT -	
UKC	

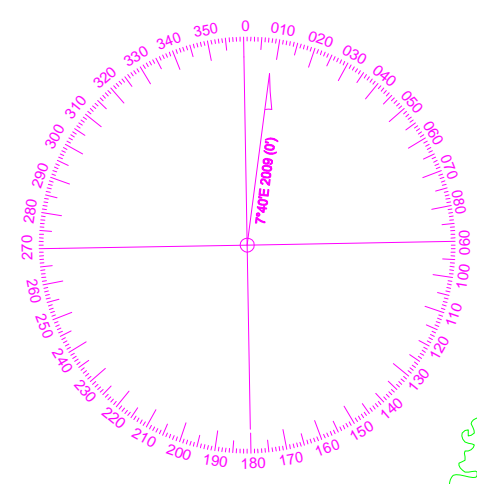
HOURLY TIDES	
TIME	HEIGHT

## 3



UNDER KEEL CLEARANCE	
VESSEL	DATE
CHANNEL DEPTH	20.5m
TIDE (MIDDLE BK STH) +	
TOTAL	
MAXIMUM DRAFT -	
UKC	

## MIDDLE BANK



HOURLY TIDES	
TIME	HEIGHT