




SMALL VESSELS 3 + 2 + BREASTLINE ON BIGHT  
LARGE VESSELS 4 + 2 + BREASTLINE ON BIGHT



PANAMAX VESSELS (225m LOA) - SUGGEST LOAD HATCHES 2,3,4,5,6. If 1 AND 7 TO BE LOADED FLEETING IS REQUIRED - SEE ABOVE.

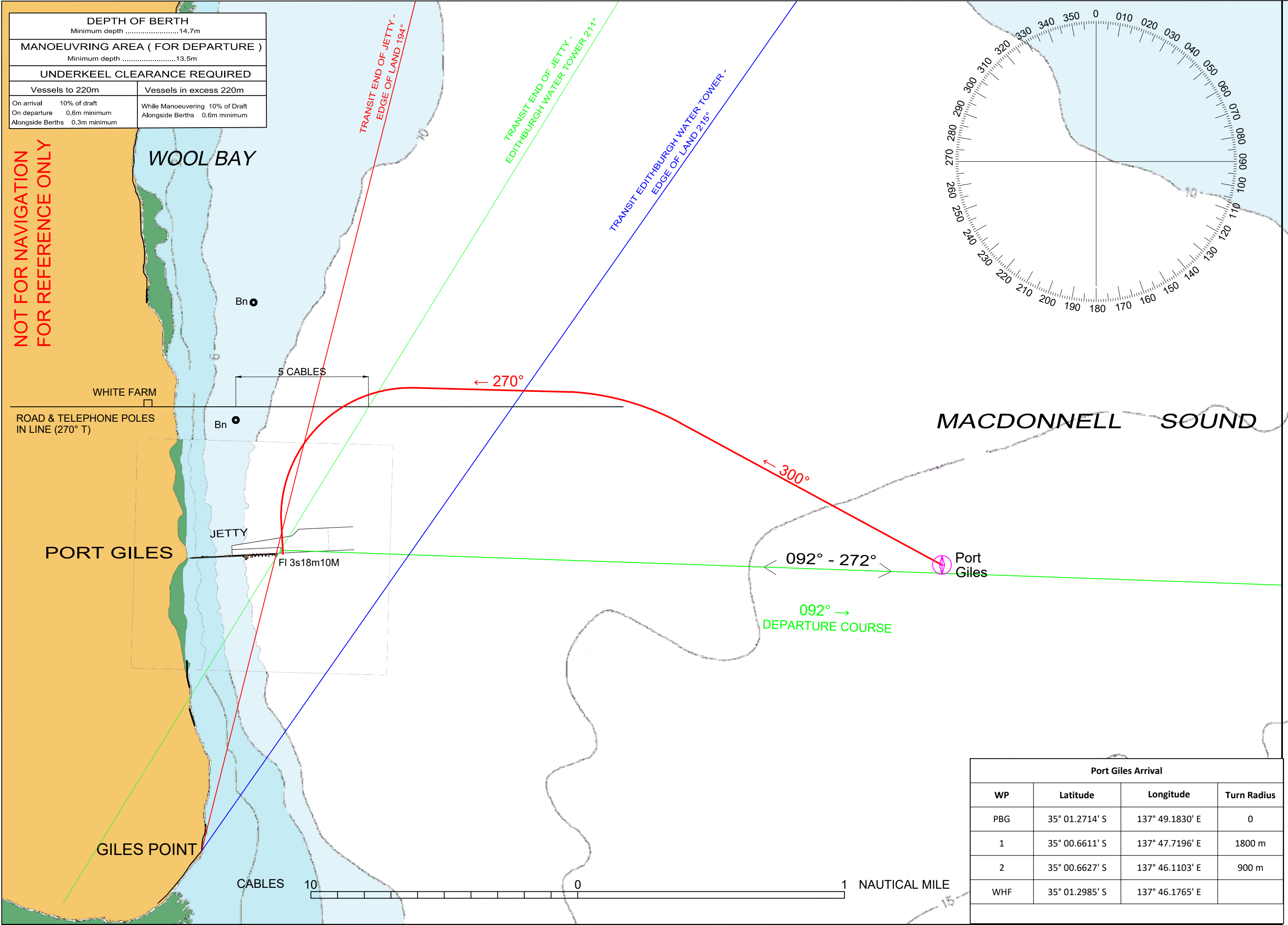


## PORT GILES

Date					Time				
Ship Name					Pilot				
From					To				
Drafts	FWD			AFT			Air Draft		
LOA			Beam			Bow To Bridge			
ENGINEERING CHECKS					ENVIRONMENTALS				
ME Tested:	Yes / No				Time	HT	TIDE HOURLY RANGE:		
Bow Thruster:	Yes / No		KW / H.P	HW			Time	HT	Range
Stern Thruster:	Yes / No		KW / H.P	LW					
Steering Tested:	Yes / No			Channel Depth					
Steering Motors:	1 / 2 / More than 2			Tide					
Gyro Compass Error			High / Low	Total Depth					
Anchors Cleared	P / S / More than 2			Max Draft			Wind		
Nav Equipment Operational	Yes / No			UKC			Direction		
Engine Load Program	Yes / No						Speed		
TUGS/ LAUNCHES / MOORINGS VHF CH 6 / 8  					Defects/Wx Warnings:				
					Notes: 1. CHART IS NOT SUITABLE FOR NAVIGATION PURPOSES. 2. COURSES ON THE CHART ARE AN INDICATION ONLY. 3. BRIDGE TEAM TO CONTINUOUSLY MONITOR THAT THE VESSEL IS PROCEEDING ACCORDING TO THE PLAN AND IMMEDIATELY BRING TO THE ATTENTION OF THE PILOT ANY MATTER WHICH CAUSES CONCERN. 4. CHART DATUM IS LAT - REFER TO AUS139. 5. OVERHEAD CLEARANCE HEIGHTS ARE IN H.A.T. 6. AIS TO BE ON AND IN UNDERWAY MODE 7. PLAN MAY ALTER DUE TO OPERATIONAL REQUIREMENTS AND DEVIATIONS WILL BE DISCUSSED.				
TUGS USE OWN LINES									
<u>LOWER TUGS LINE SLOWLY</u>				*FLINDERS PORTS IS A SMOKE FREE WORK PLACE. PLEASE DO NOT SMOKE ON THE BRIDGE WHILST THE VESSEL IS UNDER PILOTAGE					
DO NOT USE HEAVY WEIGHTS ON HEAVING LINE									
DO NOT DROP TOW LINES IN WATER									
ADDITIONAL INFORMATION:									
MASTER SIGNATURE					PILOT SIGNATURE				
FP4728 - CURRENT AS AT 19/02/2020					TIME		DATE		

DEPTH OF BERTH Minimum depth .....14.7m	
MANOEUVRING AREA ( FOR DEPARTURE ) Minimum depth .....13.5m	
UNDERKEEL CLEARANCE REQUIRED	
Vessels to 220m	Vessels in excess 220m
On arrival    10% of draft	While Manoeuvring 10% of Draft
On departure   0.6m minimum	Alongside Berths   0.6m minimum
Alongside Berths   0.3m minimum	

NOT FOR NAVIGATION  
FOR REFERENCE ONLY



Port Giles Arrival			
WP	Latitude	Longitude	Turn Radius
PBG	35° 01.2714' S	137° 49.1830' E	0
1	35° 00.6611' S	137° 47.7196' E	1800 m
2	35° 00.6627' S	137° 46.1103' E	900 m
WHF	35° 01.2985' S	137° 46.1765' E	